

ROTEX Solenoid Valves



Model 51450V01 - NAMUR Mount Solenoid

3/2 or 5/2, Poppet Type Solenoid

Convertible for either 3/2 or 5/2 action.

1/4" NAMUR mounting pad.

Economical.

In 3/2 mode, the exhaust is purged to the spring chamber.

Dust cap provided on the exhaust port.

29 to 145 psid, -4 to 158 °F.

Cv = 1.2

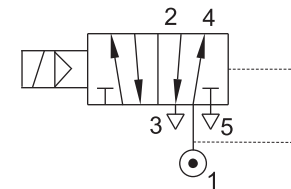
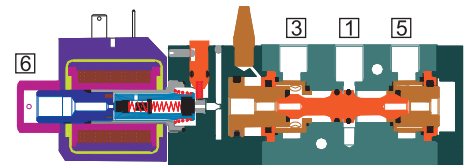
Standard with Manual Override.

Seals NBR

Available with Aluminum or Stainless body.

Weatherproof, Explosion Proof, or IS coil, IP67.

Coil Insulation : Class F, Cable entry 1/2" NPT



HOW TO ORDER

51450V01-6-2R-(Body Material)+(Coil)

Body Material Options

(blank) = Aluminum
B5 = 316SS

Coil Options

120AC/DC-FR-16 = 120 Volt AC or DC, Weatherproof, with Junction Box, Power 8W
24V-DC-16 = 24 Volt DC, Weatherproof, with Junction Box, Power 8W
120AC/DC-FR-37-01 = 120 Volt AC or DC, Exd IIC T6 Explosion Proof, with Junction Box, Power 8W
24V-DC-37-01 = 24 Volt DC, Exd IIC T6 Explosion Proof, with Junction Box, Power 8W
24V-DC-66NS-01 = 24 Volt DC, Exia IIC T6 Intrinsically Safe, with Junction Box,
Consult Rotex for entity and minimum operating parameters.

Example

51450V01-6-2R+120AC/DC-FR-16

NOTE: Consult Rotex for valves required other than specified here.

Dual Coil solenoids are an option. Non-stock.

Consult Rotex for price and availability.

Specifications are subject to change