

ROTEX Solenoid Valves



Model 30106 - NAMUR Mount Solenoid

3/2, Normally Closed Solenoid

1/4" NAMUR mounting pad.

Direct acting.

Economical.

Dust cap provided on the exhaust port.

0 to 145 psid, -4 to 158 °F.

Cv = 0.13

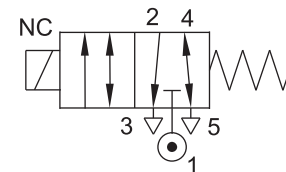
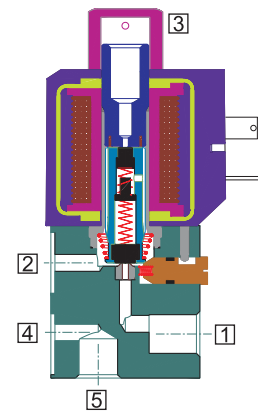
Standard with Manual Override.

Seals NBR

Available with Aluminum body only.

Weatherproof, Explosion Proof, or IS coil, IP67.

Coil Insulation : Class F, Cable entry 1/2" NPT



HOW TO ORDER

30106-1.8-2R-(Body Material)+(Coil)

Body Material Options

(blank) = Aluminum

Coil Options

- | | | |
|-------------------|---|---|
| 120AC/DC-FR-16 | = | 120 Volt AC or DC, Weatherproof, with Junction Box, Power 8W |
| 24V-DC-16 | = | 24 Volt DC, Weatherproof, with Junction Box, Power 8W |
| 120AC/DC-FR-37-01 | = | 120 Volt AC or DC, Exd IIC T6 Explosion Proof, with Junction Box, Power 8W |
| 24V-DC-37-01 | = | 24 Volt DC, Exd IIC T6 Explosion Proof, with Junction Box, Power 8W |
| 24V-DC-66NS-01 | = | 24 Volt DC, Exia IIC T6 Intrinsically Safe, with Junction Box, Consult Rotex for entity and minimum operating parameters. |

Example

30106-1.8-2R+24V-DC-37-01

NOTE: Consult Rotex for valves required other than specified here.

Specifications are subject to change