

ROTEX Solenoid Valves



Model 30334 - Pipe Mount Solenoid

3/2, Universal Solenoid

1/4" NPT connections.

Direct acting.

Economical.

Suitable for spring return actuator.

0 to 145 psid, -4 to 158 °F.

Cv = 0.7

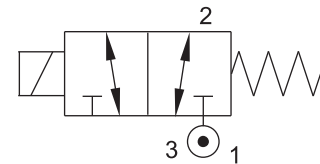
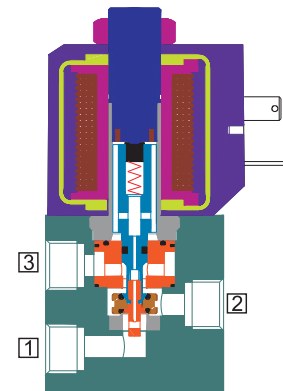
Standard without Manual Override.

Seals NBR

Available with Aluminum or Stainless body.

Weatherproof, Explosion Proof, IP67.

Coil Insulation : Class F, Cable entry 1/2" NPT



HOW TO ORDER

30334-5-2R-(Body Material)+(Coil)

Body Material Options

(blank) = Aluminum

B5 = 316SS

Coil Options

120AC/DC-FR-16 = 120 Volt AC or DC, Weatherproof, with Junction Box, Power 8W

24V-DC-16 = 24 Volt DC, Weatherproof, with Junction Box, Power 8W

120AC/DC-FR-37-01 = 120 Volt AC or DC, Exd IIC T6 Explosion Proof, with Junction Box, Power 8W

24V-DC-37-01 = 24 Volt DC, Exd IIC T6 Explosion Proof, with Junction Box, Power 8W

Example

30334-5-2R-B5+120AC/DC-FR-37-01

NOTE: Consult Rotex for valves required other than specified here.

Specifications are subject to change