

# ROTEX Solenoid Valves



## Model 51424 - NAMUR Mount Solenoid

### 3/2 or 5/2, Poppet Type Solenoid

Convertible for either 3/2 or 5/2 action.

1/4" NAMUR mounting pad.

Economical.

Dust cap provided on the exhaust port.

29 to 145 psid, -4 to 158 °F.

Cv = 0.84

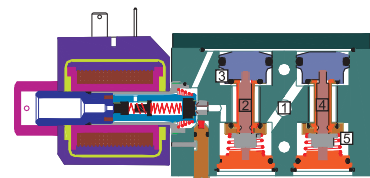
Standard with Manual Override.

Seals NBR

Available with Aluminum or Stainless body.

Weatherproof, Explosion Proof, or IS coil, IP67.

Coil Insulation : Class F, Cable entry 1/2" NPT



## HOW TO ORDER

51424-6-2R-(Body Material)+(Coil)

## Body Material Options

(blank) = Aluminum

B5 = 316SS

## Coil Options

120AC/DC-FR-16 = 120 Volt AC or DC, Weatherproof, with Junction Box, Power 8W

24V-DC-16 = 24 Volt DC, Weatherproof, with Junction Box, Power 8W

120AC/DC-FR-37-01 = 120 Volt AC or DC, Exd IIC T6 Explosion Proof, with Junction Box, Power 8W

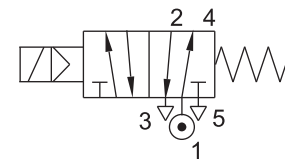
24V-DC-37-01 = 24 Volt DC, Exd IIC T6 Explosion Proof, with Junction Box, Power 8W

24V-DC-66NS-01 = 24 Volt DC, Exia IIC T6 Intrinsically Safe, with Junction Box,  
Consult Rotex for entity and minimum operating parameters.

## Example

51424-6-2R+24V-DC-66NS-01

NOTE: Consult Rotex for valves required other than specified here.



Specifications are subject to change