

ROTEX Solenoid Valves



Model 51440 - Pipe Mount Solenoid

5/2, Poppet Style Solenoid

1/4" or 1/2" NPT connections.

Pilot operated.

Suitable for double acting actuator.

Can also be used on spring return actuator.

29 to 145 psid, -4 to 158 °F.

Cv 1/4" = 1.2, Cv 1/2" = 4.2

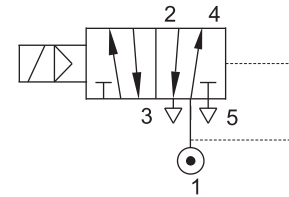
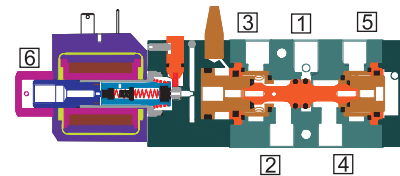
Standard with Manual Override.

Seals NBR

Available with Aluminum or Stainless body.

Weatherproof, Explosion Proof, or IS coil, IP67.

Coil Insulation : Class F, Cable entry 1/2" NPT



HOW TO ORDER

51440-(Size)-(Body Material)+(Coil)

Body Material Options

(blank) = Aluminum

B5 = 316SS

Coil Options

120AC/DC-FR-16 = 120 Volt AC or DC, Weatherproof, with Junction Box, Power 8W

24V-DC-16 = 24 Volt DC, Weatherproof, with Junction Box, Power 8W

120AC/DC-FR-37-01 = 120 Volt AC or DC, Exd IIC T6 Explosion Proof, with Junction Box, Power 8W

24V-DC-37-01 = 24 Volt DC, Exd IIC T6 Explosion Proof, with Junction Box, Power 8W

24V-DC-66NS-01 = 24 Volt DC, Exia IIC T6 Intrinsically Safe, with Junction Box,

Consult Rotex for entity and minimum operating parameters.

Example

51440-12-4R-B5+24V-DC-66NS-01

NOTE: Consult Rotex for valves required other than specified here.

Dual Coil solenoids are an option. Non-stock.

Consult Rotex for price and availability.

Specifications are subject to change